

B R I E F C O N T E N T S

C H A P T E R	1	Introducing Social Psychology	3
C H A P T E R	2	Research Methods in Social Psychology	25
P A R T O N E		Understanding the Person and Life Events	51
C H A P T E R	3	The Self	53
C H A P T E R	4	Self-Presentation and Person Perception	93
C H A P T E R	5	Thinking About Our Social World	135
P A R T T W O		Evaluating Our Social World	167
C H A P T E R	6	Attitudes	169
C H A P T E R	7	Persuasion	211
C H A P T E R	8	Prejudice and Discrimination	251
P A R T T H R E E		Understanding Our Place Within the Group	307
C H A P T E R	9	Social Influence	309
C H A P T E R	10	Group Behavior	355
P A R T F O U R		Interacting with Others	397
C H A P T E R	11	Interpersonal Attraction	399
C H A P T E R	12	Intimate Relationships	441
C H A P T E R	13	Aggression	487
C H A P T E R	14	Prosocial Behavior: Helping Others	531

C O N T E N T S

PREFACE 00

CHAPTER 1

Introducing Social Psychology 3

INTRODUCTION 4

WHAT IS SOCIAL PSYCHOLOGY? 5

Social Psychology Studies

How We Are Influenced by Others 5

Social Psychology Is More Than Common Sense 6

Social Psychology Is Studied in Both Psychology
and Sociology 7

The History of Social Psychology Reveals Its American
Roots 8

ORGANIZING PRINCIPLES OF EXPLANATION IN SOCIAL PSYCHOLOGY 12

The Self Is Shaped by—and Shapes—the Social
Environment 12

Social Cognition Involves Multiple Cognitive Strategies
Shaped by People's Motives and Desires 14

Culture Shapes Social Behavior 15

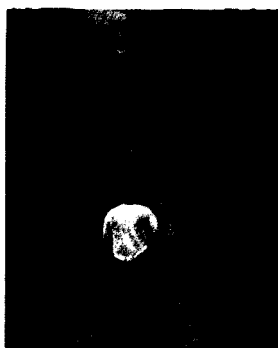
Evolution Shapes Universal Patterns of Social
Behavior 18

Brain Activity Affects and Is Affected By Social
Behavior 21



CHAPTER 2

Research Methods in Social Psychology 25



INTRODUCTION 26

CONDUCTING RESEARCH IN SOCIAL PSYCHOLOGY 26

The Research Process Involves a Series of Sequential Steps 26

Description Is the Goal of Observational Research 31

Correlational Research Assesses the Direction
and Strength of the Relationship Between
Variables 34

Experimental Research Can Determine Cause-Effect
Relationships 39

Meta-analysis Is a Statistical Procedure Used to
Understand the Outcomes of Many Studies 42

Social Psychologists Are Increasingly Using Emerging
Technologies in Their Research 42

ETHICS IN SOCIAL PSYCHOLOGY 45

All Proposed Social Psychological Studies Must Submit
to Ethical Evaluation 46

A Recurring Debate Is Whether Social Psychology
Should Be a Value-Free Science 47

PART ONE

UNDERSTANDING THE PERSON AND LIFE EVENTS 51

CHAPTER 3

The Self 53

INTRODUCTION 54

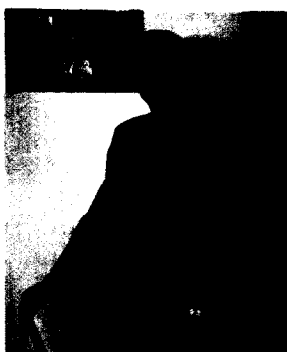
NATURE OF THE SELF 54

The Self Is a Symbol-
Using, Self-Reflective,
Social Being 54

Contemporary Self

Theories Are Based

on the Insights of George Herbert Mead and
William James 56



THE SELF AS BOTH TARGET OF ATTENTION AND ACTIVE AGENT 59

Self-Awareness Is a Temporary Psychological State 60

Self-Consciousness Is a Personality Trait 62

Self-Regulation Is the Self's Most Important
Function 65

THE SELF AS A KNOWLEDGE STRUCTURE 67

Self-Schemas Are the Ingredients of Self-Concept 67

Gender Identity and Gender Schemas Are Important
Aspects of Self-Concept 70

Culture Shapes the Structure of Self-Concept 71

EVALUATING THE SELF 76

Self-Esteem Develops During Middle Childhood and Is
Most Stable During Young Adulthood 76

Self-Esteem Differences Shape Responses to Positive
and Negative Events 78

There Is a Dark Side to High Self-Esteem 81

THE SELF AS A SOCIAL BEING 82

Social Identities Establish "What" and "Where" We Are
as Social Beings 83

In Social Relationships, Self-Esteem Is Maintained
Through Social Reflection and Social
Comparison 86

FEATURED STUDY

Adaptive Self-Regulation of Unattainable Goals 89

APPLICATIONS

Do You Engage in Binge Drinking or Eating to Escape from
Yourself? 90

THE BIG PICTURE 91

CHAPTER 4

Self-Presentation and Person Perception 93



INTRODUCTION 94

SOCIAL INTERACTION AS "THEATER" 95

Self-Presentations Are

Either Consciously or Automatically Constructed and
Monitored 96

Embarrassment and Excuse Making Commonly Follow
Failed Self-Presentations 99

High Self-Monitors Are Social Chameleons 102

IMPRESSION FORMATION 105

Our Impressions of Others Are Shaped by Their
Nonverbal Behavior 105

Culture and Personality Influence the Expression
and Use of Nonverbal Cues 109

We Form Personality Impressions with the Help
of Traits 111

Our Personality Judgments Are Most Influenced by
Negative and Early-Presented Information 113

MAKING ATTRIBUTIONS 115

We Rely upon Particular Information When Explaining
People's Actions 115

Correspondent Inference Theory Assumes That People
Prefer Making Dispositional Attributions 117

The Covariation Model Explains Attributions Derived
from Multiple Observational Points 119

BIASES IN ATTRIBUTION 121

The Fundamental Attribution Error Is the Tendency
to Make Dispositional Attributions for Others'
Actions 121

Actors Give More Weight to External Factors Than
Do Observers 124

Self-Serving Attributions Enhance and Protect
Self-Esteem 126

FEATURED STUDY

Maintaining Lies: The Multiple-Audience Problem 130

APPLICATIONS

How Good Are You at Detecting Lies? 131

THE BIG PICTURE 133

CHAPTER 5

Thinking About Our Social World 135



INTRODUCTION 136

HOW DO WE THINK? 136

We Process Information

Serially and "in

Parallel" 136

We Rely On Effortful and Effortless Thinking 137

Suppressing Thoughts Can Sometimes Backfire 138

HOW DO WE ORGANIZE AND MAKE SENSE OF SOCIAL INFORMATION? 139

We Are Categorizing Creatures 139

Schemas Are Theories of How the Social World

Operates 141

Schemas Affect What Information We Notice and

Later Remember 142

Schemas can be Situationally or Chronically

Activated 144

WHAT SHORTCUTS STRETCH OUR COGNITIVE RESOURCES? 146

The Representativeness Heuristic Helps Us

Categorize 146

The Availability Heuristic Bases Judgment on Ease

of Recall 147

The Anchoring and Adjustment Heuristic Helps Us Make

Estimations 148

Heuristic Thinking Is Not (Generally)

"Stupid Thinking" 149

WHAT ARE SOME WAYS OF THINKING ABOUT THE PAST? 150

Simulating Past Events Can Alter Our Social

Judgments 150

The Hindsight Bias Is Fueled by Our Desire for Sense

Making 151

Counterfactual Thinking Is Most Likely Following

Negative and Unexpected Events 153

HOW DO EXPECTATIONS SHAPE OUR SOCIAL THINKING? 154

We Expect That Others Have Similar Views as Us 154

We Expect To Find Confirmation For Our Beliefs 155

Our Expectations Can Become Self-Fulfilling

Prophecies 156

Expecting a "Just World" Fosters Comfort

and Blame 159

Expecting Failure Breeds Helplessness 160

FEATURED STUDY

Does Unrealistic Optimism Change Following a Negative Experience? 161

APPLICATIONS

How Do You Explain Negative Events in Your Life? 162

THE BIG PICTURE 164

PART TWO

EVALUATING OUR SOCIAL WORLD 167

CHAPTER 6

Attitudes 169

INTRODUCTION 170

THE NATURE OF ATTITUDES 171

Attitudes Are Positive or Negative Evaluations of Objects 171

People Differ in Their Need to Evaluate 172

Implicit Attitudes May Underlie Explicit Attitudes 174

Values Can Shape Attitudes and Behavior 175

HOW ARE ATTITUDES FORMED AND MAINTAINED? 177

Mere Exposure Can Lead to Positive Attitudes 177

Attitudes Can Form Through Classical Conditioning 179

Reinforcement and Punishment Can Shape Attitudes 181

Self-Perception Theory Contends That Behavior Causes Attitudes 182

Attitudes Are Influenced by Changes in Facial Expression, Head Movement, and Body Posture 183

The Functional Approach Asserts That Attitudes Are Formed to Satisfy Current Needs 185

WHEN DO ATTITUDES PREDICT BEHAVIOR? 188

Several Factors Determine the Attitude-Behavior Relationship 188

The Theory of Planned Behavior Asserts That Attitudes Influence Behavior by Shaping Intentions 191

IS COGNITIVE CONSISTENCY AN IMPORTANT ASPECT OF ATTITUDES? 194

Cognitive Dissonance Theory Asserts That Rationalization Shapes Attitudes 195

Cognitive Consistency Is Not a Universal Motive 201



Several Theories Have Challenged Cognitive Dissonance
Theory 202

FEATURED STUDY

Group Membership and Assumed Attitude Similarity 206

APPLICATIONS

How Do Reference Groups Shape Your Social and Political
Attitudes? 207

THE BIG PICTURE 209

CHAPTER 7

Persuasion 211

INTRODUCTION 212

**HOW HAVE VIEWS OF
PERSUASION
CHANGED? 213**

The Message-Learning
Approach Identified
What Strengthens and
Weakens a Persuasive Message 213

The Cognitive-Response Approach Seeks to Identify
What Makes People Think About Persuasive
Arguments 213

**SOURCE VARIABLES: WHO IS
COMMUNICATING? 216**

Low Credibility Is a Discounting Cue 216
Attractiveness Enhances Persuasiveness 218

**MESSAGE VARIABLES: WHAT IS THE
CONTENT? 219**

Vividness Can Bolster Evidence, but Sometimes It
Undermines Persuasion 220
Fear Appeals Facilitate Persuasion if Certain Conditions
Are Met 221
Humor Increases Attention to a Message, but It May
Interfere with Message Processing 222
Two-Sided Messages Inoculate Audiences Against
Opposing Views Better Than One-Sided
Messages 224
Repeating a Message Increases Its Persuasive
Power 226

**CHANNEL VARIABLES: HOW IS THE MESSAGE
TRANSMITTED? 227**

Rapid Speech Can Benefit Peripheral-Route Persuasion
Yet Often Hinders Central-Route Processing 227
Powerful Speech Is Generally More Persuasive Than
Powerless Speech 228



AUDIENCE VARIABLES: TO WHOM IS THE MESSAGE DELIVERED? 230

Good Moods Generally Foster, but Sometimes Hinder, Persuasion 230

Degree of Message Elaboration Is Shaped Both by Issue and Impression Involvement 231

Individual Differences Affect Susceptibility to Persuasion 232

THE ROLE OF THE SELF IN PERSUASION 239

Self-Generated Persuasion Is Very Effective 239

We Can Develop Attitude Certainty By Actively Trying to Counterargue 241

Employing Subtle Labels Can Nudge People into Attitude and Behavior Change 242

FEATURED STUDY

Subliminal Priming and Persuasion 245

APPLICATIONS

Can You Be Persuaded by Subliminal Messages? 247

THE BIG PICTURE 249

CHAPTER 8

Prejudice and Discrimination 251

INTRODUCTION 252

WHAT DO WE MEAN BY PREJUDICE AND DISCRIMINATION? 252

Prejudice Is an Attitude and Discrimination Is an Action 254

Prejudice Can Be Either Explicit or Implicit 255

There Are Three Basic Forms of Prejudice 256

Certain Groups Are More Acceptable Prejudice Targets Than Others 257

HOW DOES STEREOTYPING CAUSE PREJUDICE AND DISCRIMINATION? 261

Outgroup Members Are Perceived as Being "All Alike" 262

Stereotypes Are Beliefs About Social Groups 262

Stereotypes Are Often Based on Illusory Correlations 264

Physical Appearance Cues Often Activate Stereotypes 266

Stereotype Subcategories Foster the Retention of Global Stereotypes 268

Stereotypical Thinking Is More Characteristic of the Powerful 269



Stigmatized Groups Respond to Negative Stereotypes
with Opposition and Anxiety 270

WHAT MOTIVES AND SOCIAL FACTORS SHAPE PREJUDICE AND DISCRIMINATION? 274

We Automatically Favor Ingroup Members over
Outgroup Members 275

Intergroup Competition Can Lead to Prejudice 276

Prejudice Can Serve as a Justification
for Oppression 280

Authoritarianism Is Associated with Hostility toward
Outgroups 281

THE SOCIAL PSYCHOLOGY OF RACISM AND SEXISM 285

Modern-Day Racism Is More Ambivalent Than Openly
Hostile 285

Sexism Has Both a Hostile and a Benevolent
Component 289

CAN WE REDUCE PREJUDICE AND DISCRIMINATION? 294

Social Scientists Differ on Whether Stereotyped
Thinking Can Be Changed 294

The Contact Hypothesis Identifies Four Conditions That
Can Reduce Intergroup Conflict 297

FEATURED STUDY

Intergroup Contact, Friendship, and Prejudice
Reduction 300

APPLICATIONS

How Can Our Schools Both Reduce Intergroup Conflict and
Promote Academic Achievement? 302

THE BIG PICTURE 304

PART THREE

UNDERSTANDING OUR PLACE WITHIN THE GROUP 307

CHAPTER 9

Social Influence 309

INTRODUCTION 310

WHAT IS SOCIAL INFLUENCE? 311

Three Behavioral
Consequences of Social
Influence Are
Conformity, Compliance, and Obedience 312



People With Social Power Are More Likely to Initiate Action 313

CLASSIC AND CONTEMPORARY CONFORMITY RESEARCH 314

Sherif's Norm Development Research Analyzed Conformity to an Ambiguous Reality 314

Specific Situations Can Automatically Activate Specific Social Norms 316

Asch's Line Judgment Research Analyzed Conformity to a Unanimous Majority 318

Conformity Can Be Caused by Both Normative and Informational Influence 320

Schachter's "Johnny Rocco" Study Investigated the Rejection of the Nonconformist 321

WHAT FACTORS INFLUENCE CONFORMITY? 323

Situational Factors Impact Conformity 323

Personal Factors Influence Conformity 325

Individualists and Collectivists Differ in Their Conformity Patterns 327

Under Certain Conditions, the Minority Can Influence the Majority 328

Conformity Is Sometimes Automatically Activated 331

COMPLIANCE 332

Three Factors That Foster Compliance Are Positive Moods, Reciprocity, and Giving Reasons 332

Various Two-Step Compliance Strategies Are Effective for Different Reasons 335

OBEDIENCE 339

Milgram's Research Suggests That Obeying Destructive Commands Is More the Rule Than the Exception 339

Orders to Inflict Psychological Harm on Victims Are Also Likely to Be Obeyed 343

Observing Others Defy Authority Greatly Reduces Obedience 345

TOWARD A UNIFIED UNDERSTANDING OF SOCIAL INFLUENCE 346

Social Impact Theory States That Influence Is Determined by People's Number, Strength, and Immediacy 346

FEATURED STUDY

Falsely Accepting Guilt 349

APPLICATIONS

Could You Be Pressured to Falsely Confess to a Crime? 350

THE BIG PICTURE 351

CHAPTER 10

Group Behavior 355

INTRODUCTION 356

THE NATURE

OF GROUPS 356

Groups Differ in Their
Social Cohesiveness
357

Group Structure Develops Quickly and Changes
Slowly 359

There Are Five Phases to Group Membership 360

Groups Accomplish Instrumental Tasks and Satisfy
Socioemotional Needs 363

GROUP INFLUENCE ON INDIVIDUAL BEHAVIOR 364

Social Facilitation Enhances Easy Tasks and Inhibits
Difficult Tasks 364

Social Loafing Occurs When Our Individual Output
Becomes "Lost in the Crowd" 367

Deindividuation Involves the Loss of Individual
Identity 370

DECISION MAKING IN GROUPS 374

Group Decision Making Occurs in Stages and Involves
Various Decision Rules 374

Group Discussion Enhances the Initial Attitudes of
People Who Already Agree 376

Groupthink Occurs When Consensus-Seeking Overrides
Critical Analysis 379

LEADERSHIP 382

A Leader Is an Influence Agent 382

Transformational Leaders Take Heroic and
Unconventional Actions 382

The Contingency Model Highlights Personal and
Situational Factors in Leader Effectiveness 383

Gender and Culture Can Influence Leadership Style 385

GROUP INTERESTS VERSUS INDIVIDUAL INTERESTS 387

Social Dilemmas Occur When Short-Term and Long-
Term Interests Conflict 388

Cooperation Is Necessary to Resolve Social Dilemmas 390

FEATURED STUDY

Group Decision Rules in Civil Juries 392

APPLICATIONS

How Do Juries Make Decisions? 393

THE BIG PICTURE 395



PART FOUR

INTERACTING WITH OTHERS 397

CHAPTER 11

Interpersonal Attraction 399

INTRODUCTION 400

AFFILIATION NEEDS 400

Two Reasons for
Affiliation Are
Comparison and
Exchange 401

Many Factors Influence Our Affiliation Desires 402

CHARACTERISTICS OF THE SITUATION AND ATTRACTION 406

Close Proximity Fosters Liking 406

Familiarity Breeds Liking 406

Our Affiliation Desires Increase with Anxiety 408

CHARACTERISTICS OF OTHERS AND ATTRACTION 412

We Are Drawn Toward the Physically Attractive 412

There Are Both Cultural Differences and Similarities in
Attractiveness Standards 414

Other People's Physical Appearance Influences

Perceptions of Our Own Attractiveness 421

Birds of a Feather Really Do Flock Together 422

We Are Also Attracted to "Complementary"
Others 426

We Like Those Who Like Us 428

WHEN SOCIAL INTERACTION BECOMES PROBLEMATIC 430

Social Anxiety Can Keep Us Isolated from Others 430

Loneliness Is the Consequence of Social Isolation 431

FEATURED STUDY

Alleviation of Speech Anxiety 435

APPLICATIONS

How Can Social Skills Training Improve Your Life? 436

THE BIG PICTURE 438



CHAPTER 12

Intimate Relationships 441



INTRODUCTION 442

WHAT IS INTIMACY? 443

Intimacy Involves

Including Another in Your Self-Concept 443

PARENT-CHILD ATTACHMENT AND LATER ADULT RELATIONSHIPS 446

Attachment is an Inborn Adaptive Response 446

Children Develop Different Attachment Styles 447

Childhood Attachment Styles Influence Adult Romantic Relationships 448

FRIENDSHIP 451

Self-Disclosure Shapes Friendship Development and Maintenance 451

Gender Differences Exist in Heterosexual Friendships 454

Cross-Sex Heterosexual Friendships Gravitate to an "Intimacy Mean" 457

Gender Differences Disappear in Same-Sex Homosexual Friendships 458

ROMANTIC RELATIONSHIPS 459

Culture Shapes How We Think About Romantic Love 460

Social Scientists Initially Identified Many Types of Romantic Love 462

Passionate Love Can Be Triggered by Excitation Transfer 463

Companionate Love Is More Stable and Enduring Than Passionate Love 468

Women and Men May Differ in Their Experience of Love 468

WILL LOVE ENDURE? 471

Partners Are Satisfied When the Ratio Between Their Rewards and Costs Are Similar 471

Self-Esteem Can Both Facilitate and Undermine Romantic Love 472

Perceiving Partners in the Best Possible Light Leads to Satisfying Relationships 473

Partners Who Can "Read" Each Other's Thoughts and Feelings are Happier 474

Social Support Predicts Relationship Satisfaction 475

We Are Meaner to Those We Love Than We Are to Strangers 476

People Use Different Strategies to Cope with a Troubled Relationship	477
Romantic Breakups Often Cause Emotional Distress	478

FEATURED STUDY

Mate Poaching Across Cultures	480
-------------------------------	-----

APPLICATIONS

What Causes Jealousy and How Can You Cope with It?	481
--	-----

THE BIG PICTURE 483

CHAPTER 13

Aggression 487

INTRODUCTION 488

WHAT IS

AGGRESSION? 488

Social Psychologists
Define Aggression as
“Intentional
Harm” 488

A Distinction Has Traditionally Been Made Between
“Instrumental” and “Hostile” Aggression 489

Gender and Personality Moderate the Expression of
Aggression 491

Delegitimizing Outgroups Promotes and Justifies
Aggression 494

THE BIOLOGY OF AGGRESSION 495

Evolution Shaped Our Aggressive Behavior
Patterns 495

Biological Factors Influence Aggressive Behavior 496

AGGRESSION AS A REACTION TO NEGATIVE AFFECT 498

The Frustration-Aggression Hypothesis Asserts That
Aggression Is Always the Product of Frustration 498

The Cognitive-Neoassociationist Model Explains Our
Initial Reaction to Provocation 500

Alcohol Consumption Increases the Likelihood of
Aggression 504

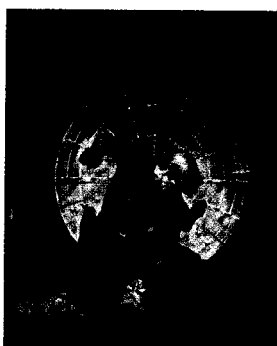
Excitation Transfer Can Intensify Hostility-Based
Aggression 505

LEARNING AGGRESSIVE BEHAVIOR 506

Social Learning Theory Emphasizes the Acquisition and
Maintenance of Aggressive Behavior 506

Media and Video Violence Fosters Aggressive
Behavior 509

The “Culture of Honor” Encourages Male
Violence 512



SEXUAL AGGRESSION 513

- Pornography Promotes a Belief in the “Rape Myth” and May Increase Male Violence Against Women 513
- Culture-Based Sexual Scripts Make Acquaintance Rape More Likely 518
- Sexual Jealousy Often Leads to Intimate Violence 519

REDUCING AGGRESSION 522

- Punishment Can Both Decrease and Increase Aggression 522
- Inducing Incompatible Responses Can Inhibit Aggression 523
- Teaching Nonaggressive Responses to Provocation Can Effectively Control Aggression 524

FEATURED STUDY

- Sexually Aggressive Men’s Cognitive Associations About Women, Sex, Hostility, and Power 526

APPLICATIONS

- How Can Acquaintance Rape Be Prevented? 527

THE BIG PICTURE 528

CHAPTER 14

Prosocial Behavior: Helping Others 531



INTRODUCTION 532

WHAT IS PROSOCIAL BEHAVIOR? 532

- Prosocial Action Is Voluntary and Benefits Others 532
- Gender Influences Helping 533

WHY DO WE HELP? 535

- Helping Is Consistent with Evolutionary Theory 535
- Social Norms Define the Rules of Helping Others 537
- Learning to Be a Helper Involves Both Observation and Direct Reinforcement 539

WHEN DO WE HELP? 543

- Bystander Intervention Involves a Series of Decisions 544

Outcome and Information Dependence Produce the Audience Inhibition Effect 547

Diffusion of Responsibility Increases with the Number of Bystanders 549

Bystander Intervention Is Also Shaped by Emotional Arousal and Cost-Reward Assessments 551

Positive and Negative Moods Can Either Increase or Decrease Helping 553

DOES TRUE ALTRUISM REALLY EXIST? 557

The Empathy-Altruism Hypothesis Contends That Empathy Produces Altruistic Motivation 557

There Are Individual Differences in Empathic Responding 559

WHOM DO WE HELP? 561

We Tend to Help Similar Others 561

We Help Deserving Others, but We Also Blame Victims 562

ARE THERE HIDDEN COSTS FOR HELP RECIPIENTS? 563

Being Unable to Reciprocate Help Can Create Stress 563

Receiving Help Can Threaten Self-Esteem 564

FEATURED STUDY

Can Imagining the Presence of Others Induce the Bystander Effect? 566

APPLICATIONS

Can Social Psychological Knowledge Enhance Prosocial Behavior? 567

THE BIG PICTURE 568

Appendix A-1

Glossary G-1

References R-1

Credits C-1

Name Index N-1

Subject Index S-1